



Visual Story for the Relaxed Performance of

Zorro: Family Code



Tuesday December 11th, 11:30am

Alberta Theatre Projects, Martha Cohen Theatre

Contents

Information about Alberta Theatre Projects	1
Getting Here.....	2
The Martha Cohen Theatre.....	4
About the show.....	9
The Performers	10
About the story	12
Things to look out for.....	13
Inside the Theatre and During the Performance	14

This visual story is designed for visitors to the relaxed performance of **Zorro: Family Code** to help prepare you if you are curious (or anxious) about your visit.

Would you like a familiarisation visit?

If you would like to visit the theatre and to look around the space, please call Talore Peterson 403-294-7475 x1098 or email

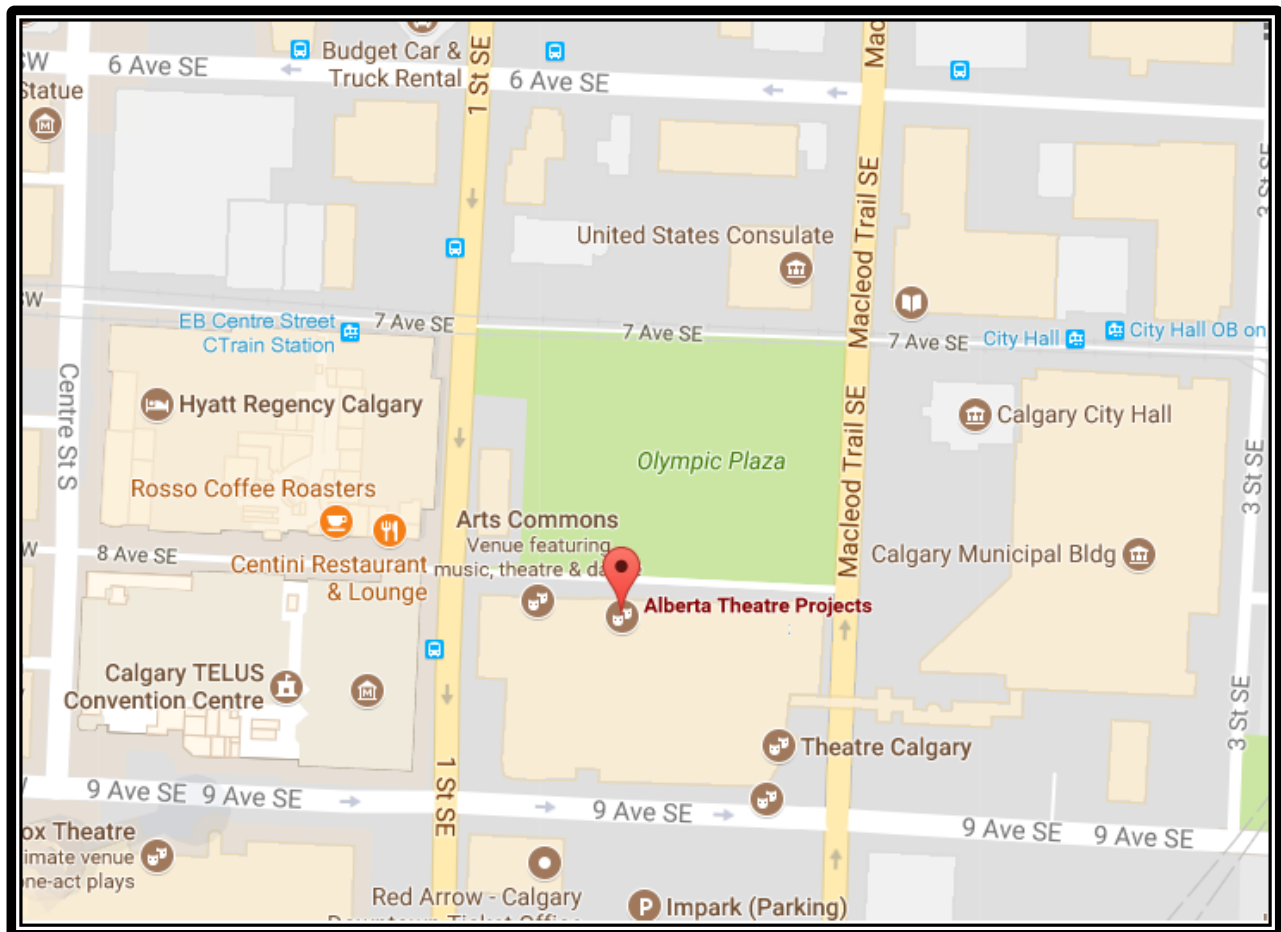
tpeterson@atplive.com

Information about Alberta Theatre Projects

Where is Alberta Theatre Projects?

Address: Martha Cohen Theatre, 215 8th Ave SE.

Alberta Theatre Projects (ATP) is located in downtown Calgary within the Arts Commons Building. We perform our plays in the **Martha Cohen Theatre**.



Getting Here

School Bus

If you are coming on a school bus you will come in our 8th Ave entrance that looks like this.



Driving

If you drive you might park in the Arts Commons Parkade. Use Elevator 2 to access the ground floor.



Elevator 2 will take you to the centre court of Arts Commons. To get to the Martha Cohen from here you will go to the left (←). The theatre is just around the corner.



Transit or Access

You can take the C-train and get off at City Hall Station and walk to the theatre.



Then you will walk through the Olympic Plaza Park to get to building. The park is in the busy part of downtown so you might hear and see buses, cars, and groups of people.



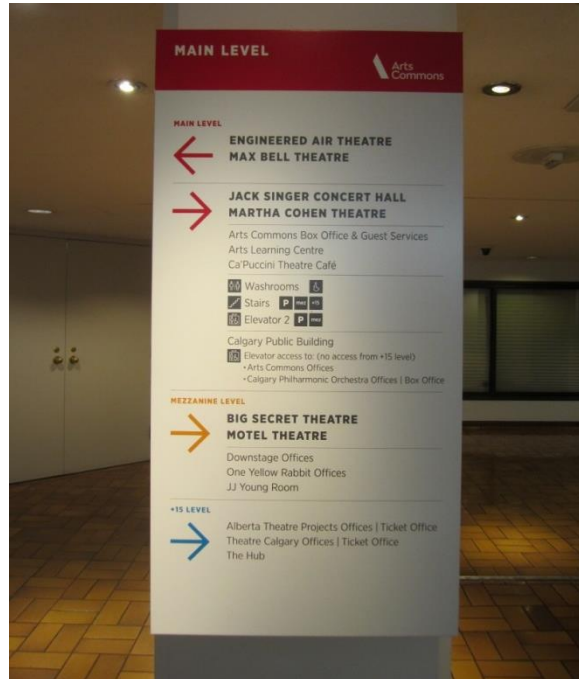
If you are walking from the train or getting dropped off you may come in this door.



From here you will go to the right (→) and follow the signs to the Martha Cohen Theatre.

The Martha Cohen Theatre

ATP's theatre is called the Martha Cohen theatre and there are signs around Arts Commons to help you find your way. Look for signs that look like this.



Theatre Entrance



Tickets

When you enter the theatre you will meet Talore Peterson. She will let you know where you will be seated for the performance. She can answer any of your questions.

Wheelchair access

If you use a wheelchair or have other accessibility needs you will meet Talore at the Theatre Entrance and she will guide you to the elevators.

Lobby

The Martha Cohen Theatre lobby has two levels. The lower level has a coat check and washrooms.

The upper level has the bar and a little stage. You will be



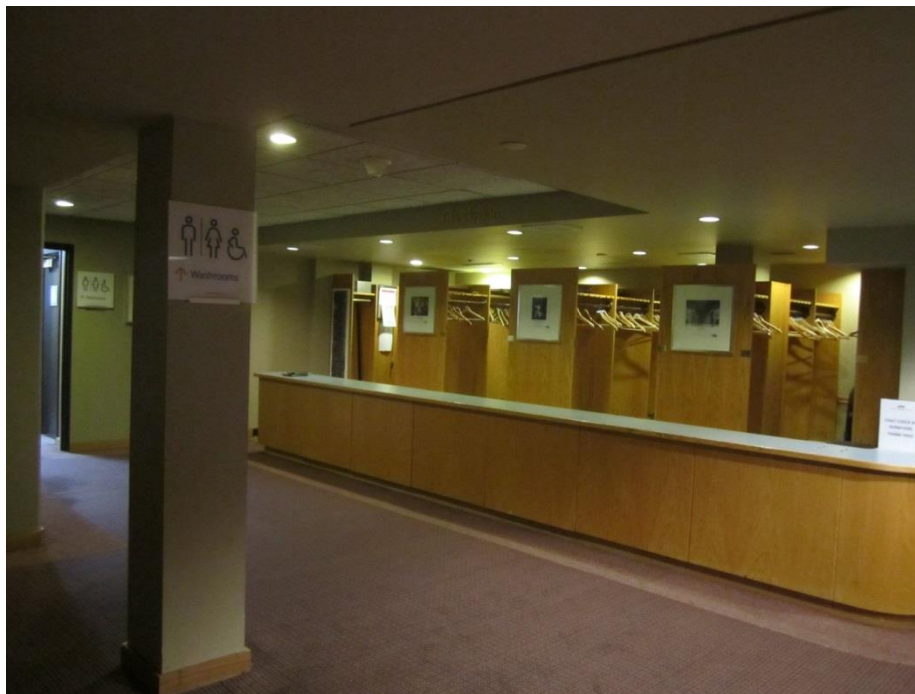
welcome to wait on either level before the show begins.

Before the show the lobby will be busy with lots of people. If you need assistance you can ask anyone with a name tag on and they can help.



Washrooms

The washrooms are located down this hallway beside the coat check. You can use the washroom at any time while you are here.



Our Team

All of the ATP staff members will be wearing a black and white nametag that looks like this:



These are some of the people you might see when you arrive:

Front of House Manager: This person will be moving around the lobby and answering any questions any one might have.

Ushers: Usher will help you find your seat in the theatre. They will be near the doors if you need anything. They will also give you the show program so you can find out more about the show and the people who worked on it.

Artistic Associate Youth Engagement: This is the person who organizes schools coming to see plays. She will welcome you and be around to answer any questions.

If you have any questions please feel free to ask anyone who is wearing a nametag.

About the show

Performance time

The performance will start at **11:30am**

The performance is approximately one hour and 30 minutes and will finish at around 1:00 pm.

Changes to the show

Compared to other performances, there will be some changes to the lighting and sound to create a less intense environment.

The house lights in the auditorium will remain on low throughout the performance.

Lobby Announcements

The front of house manager will make announcements in the Lobby of the Theatre to let you know when the show is about to begin. She will make these announcements 5 minutes and 3 minutes before the show starts. When you hear these announcements please make your way to your seats.

Chill-Out Zone

If you want to leave the Theatre at any time, there is a Chill-Out area you can visit.

You can go there to relax if you need a little break before going back into the theatre.

If you ask an usher they will show you to this area.

The Performers

Derek Flores plays Zorro



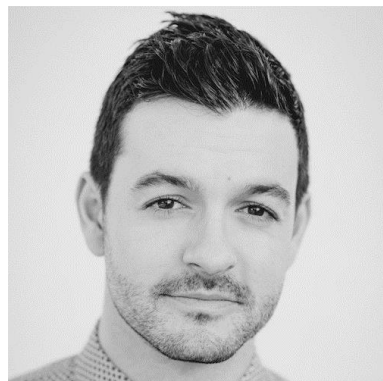
Natasha Strickey plays Isadora



Lucian-River Chauhan plays Miguel



Tyrell Crews plays Gonzales



Mabelle Carvajal plays Maria



Kevin Corey plays many characters
including the Friar and the Soldier



About the story

The story is about **Zorro**; a masked vigilante to who defends the commoners against corrupt and cruel officials and other villains

Zorro is the secret identity of **Don Diego de la Vega**.

Don Diego de la Vega(aka Zorro)has two children, **Miguel** who is 10 and **Isadora** who is 16.

Maria is the local inn keeper. She takes care of the commoners, providing them food and shelter. She is friends with Don Diego and his family.

Zorro's arch nemesis is **Sergeant Pablo Gonzales**.

Sergeant Pablo Gonzales has set his sights on confiscating the Inn of the widow, **Maria**.

Don Diego de la Vega is getting older and is not able to continue as Zorro for much longer. He is worried about how to pass along the duty to his son, who is still too young.

Secretly **Isadora** is learning how to use a sword.

Things to look out for

There will be **music** during the show.

In the show there is **fighting** – but the actors are **not really angry at each other** or hurting each other, they are **acting**. And even though some of the *characters* in the story get hurt, **the actors *do not get hurt*. In fact you will get to meet the actors after the show!**

Some of the actors play different *characters*, and sometimes wear different costumes. A **costume** is the name of the clothes that actors wear on stage.

Inside the Theatre and During the Performance



There are three tiers of seating. There are two entrances to the lobby on each level and you can leave at any time.

When you come into the theatre an usher will help you find your seat. When you are settled you will have people sitting in front, beside, and behind you. Some people might be chatting. When the lights get dimmer you know the performance is about to start.

During the performance please feel free to laugh or cry, or react to the performance in whatever way feels comfortable for you.

Some people might like the play, and some might not like it. It's all right to feel happy or sad after a theatre performance.

At the end of the play the actors will return to the stage to take a bow, people will clap. It's your opportunity to show your appreciation of the play by clapping and cheering.

Following the bows the actors will come back onto the stage and you will have the chance to ask them a question. We may not have time for everyone's questions but don't worry you can always send us an email and we will do our best to answer your question